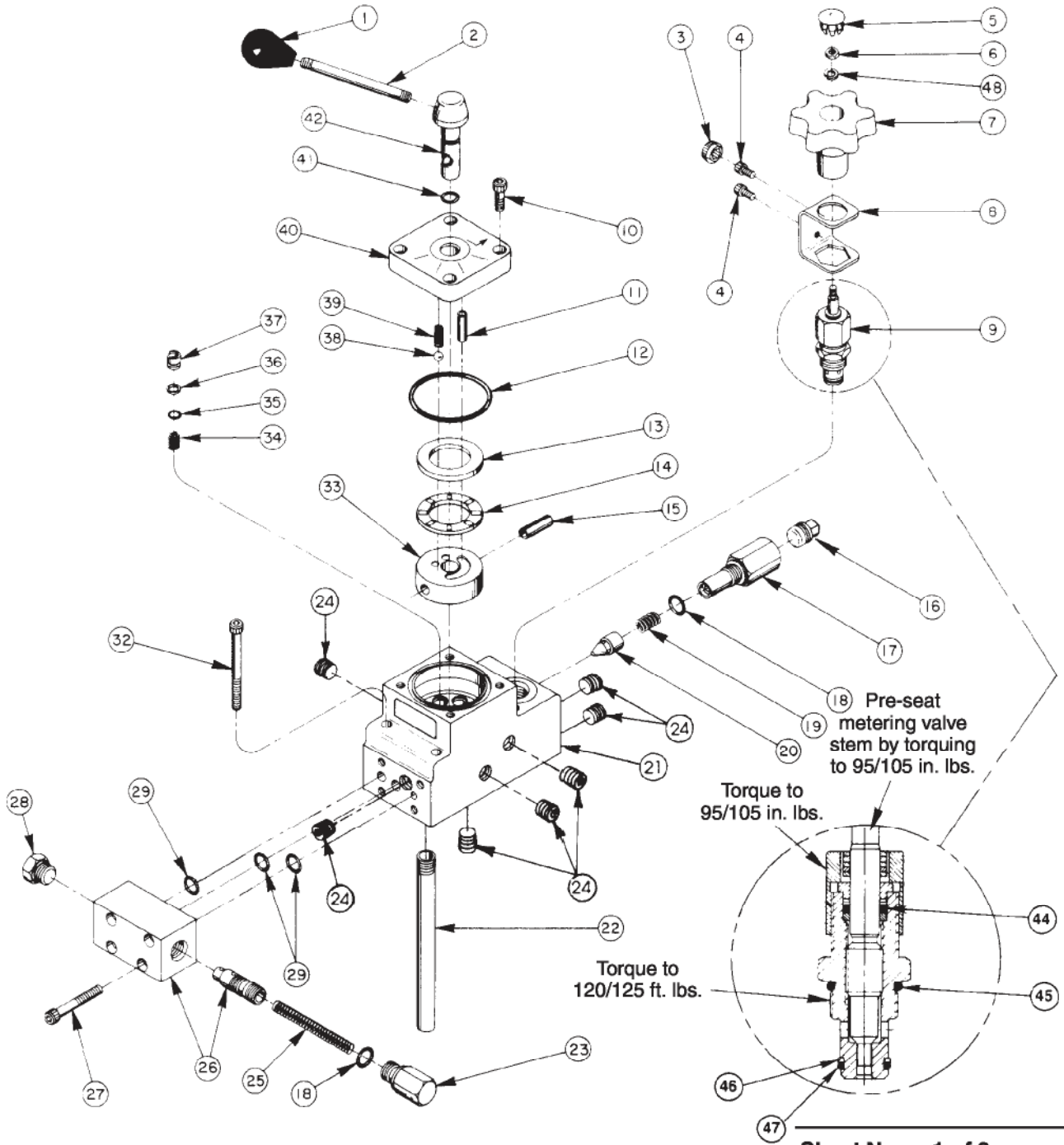


**MODEL B
 4-POSITION, 3-WAY**

**MANUAL VALVE ASSEMBLY
 VOLUME/FLOW CONTROL --- PRESSURE COMPENSATED**



Item No.	Part No.	No. Req'd	Description
1	250885	1	Knob
2	21639	1	Stud
3	207382	1	Plastic Knob (on 3482-0008, 9609, & 60916, 420247-SATEC & 64529-HOGEN)
4	11434	2	Soc. Hd. Cap Screw (#10-24 x 1/2 Lg.; on 3482-0008, 9609 & 60916, 420247-SATEC)
5	11455	1	Snap Plug
6	11010	1	Machine Nut (#10-32 UNF; See note below)
7	44708	1	Valve Knob
8	302956	1	Locking Bracket (on 3482-0008, 9609 & 60916, 420247-SATEC)
9	302938	1	Flow Control Valve
10	10008	4	Soc. Hd. Cap Screw (1/4-20 X 3/4 Lg.; Torque to 100/120 in. lbs.)
11	11916	1	Roll Pin (1/4 dia. X 7/8 Lg.)
12	11229	1	O-ring (2-3/8" X 2-3/16" X 3/32)
13	11227-1	1	Bearing Race
14	11228	1	Thrust Bearing
15	10496	1	Roll Pin (5/16 dia. X 1" Lg.)
16	11127	1	Plug (3/8 NPTF)
17	302939	1	Adapter (Torque to 30/40 ft. lbs.)
18	10300	2	O-ring (.468 I.D. X .078 cs)
19	10425	1	Compression Spring (3/8 O.D. X 3/4 Lg.)
20	20771	1	Poppet
21	64528	1	Valve Body
22	212998	1	Drain Line (NOTE: Used only when pump-mounted)
23	204748	1	Spring Retainer Fitting (Torque to 30/40 ft. lbs.)
24	15130	7	Pipe Plug (1/16 NPTF)
25	207404	1	Compression Spring (5/16 O.D. X 2-7/16" Lg.)
26	302953	1	Spool & Body Assembly (Consists of 44704 & 44705 which must be ordered as a set)
27	10022	4	Soc. Hd. Cap Screw (Torque to 100/120 in. lbs.)
28	11953	1	Plug (O-ring included; Torque to 30/40 ft. lbs.)
29	10269	3	O-ring (3/8 X 9/16 X 3/32)
32	10855	4	Soc. Hd. Cap Screw (1/4-20 X 2-3/4" Lg.)
33	44686	1	Rotor
34	10446	4	Compression Spring (19/64 O.D. X 7/16 Lg.)
35	10266	4	O-ring (1/4 X 3/8 X 1/16)
36	12184	4	Backup Washer (Teflon)
37	207381	4	Shear Seal
38	10375	1	Steel Ball (1/4 dia.)
39	16320	1	Compression Spring (1/4 O.D. X 3/4 Lg.)
40	201814	1	Valve Body Cap
41	10268	1	O-ring (3/8 X 1/2 X 1/16)
42	207380	1	Valve Stem
44	10267	1	O-ring (7/16 X 5/16 X 1/16)
45	10527	1	O-ring (13/16 X .644 X .087)
46	15500	1	Backup Washer (9/16 X 7/16 X .048)
47	12098	1	O-ring (9/16 X 7/16 X 1/16)
48	10241	1	Lockwasher

NOTE: Tighten nut with valve in open position. Line up No. 1 on knob with arrow on decal when valve is closed (CW Rotate).

NOTE: Due to the complexity of this valve and the testing of it, a repair kit is not available. Any service repair must be done by Power Team Service Repair Department.

Note: Removed Porting Decal (Item #43) last revision(s) made to this form.

