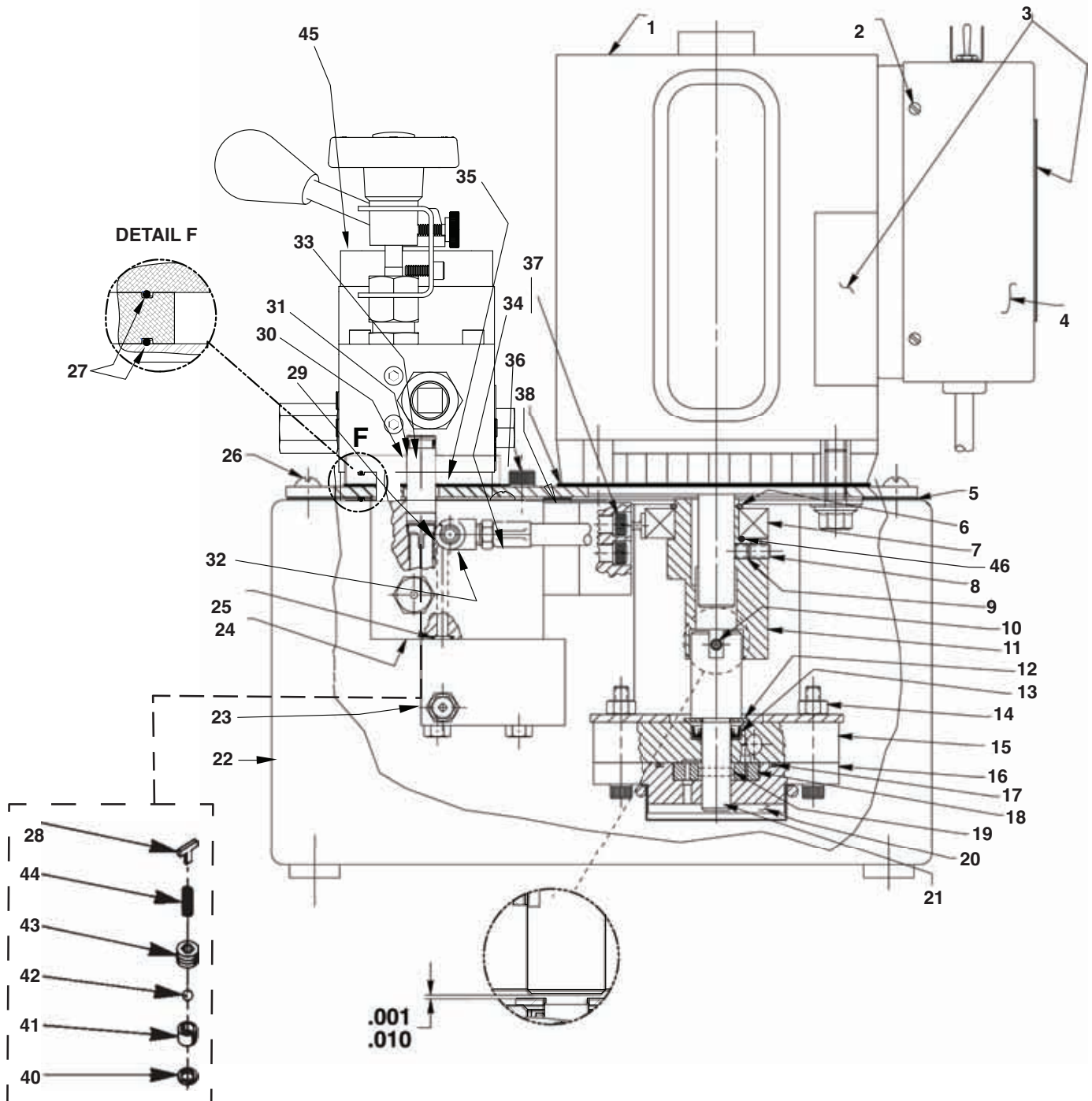


## ELECTRIC HYDRAULIC PUMP Model B

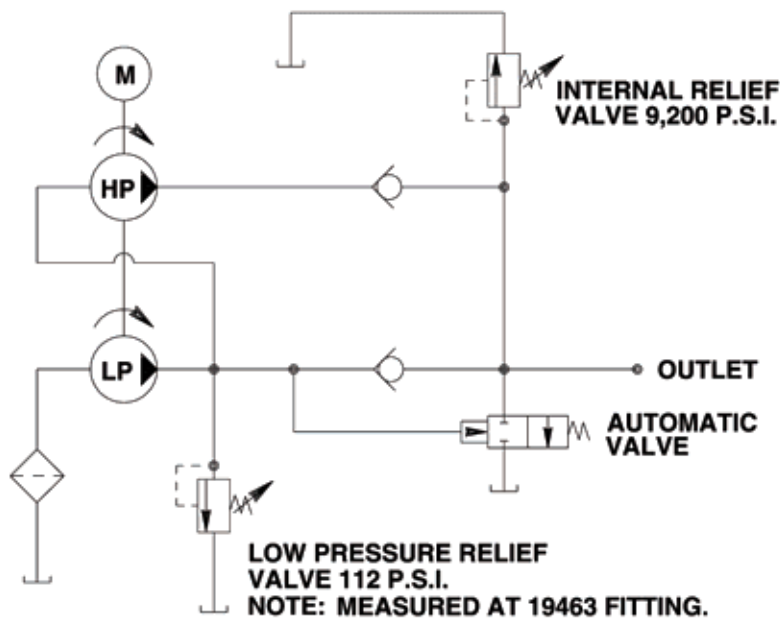


# Parts List, Form No. 1000675, Back sheet 1 of 3

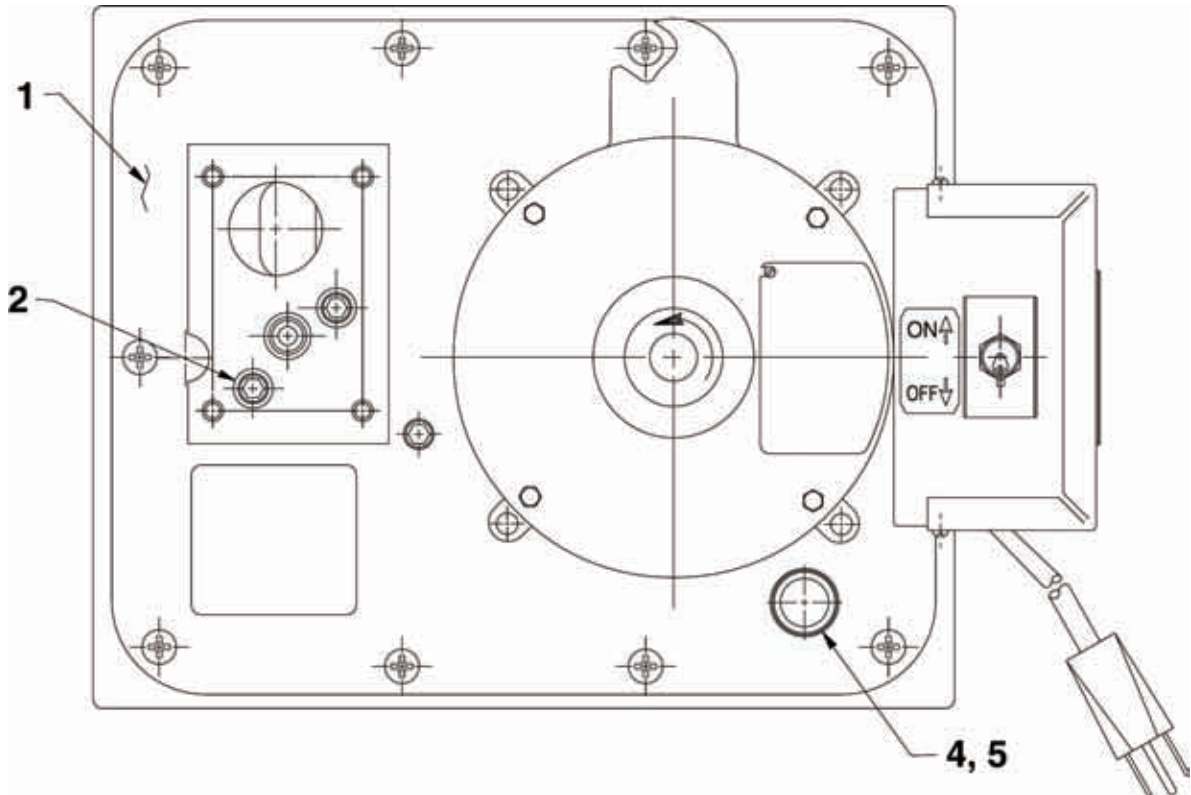
Item No.	Part No.	No. Req'd	Description	Item No.	Part No.	No. Req'd	Description
1	58196WH2	1	Electric Motor (For PE17-FORN & PE17-TEST)	22	40063GY15	1	Reservoir (2 gal.; For PE17-FORN)
	303912	1	Electric Motor (For PE17N-TEST)		40063BK2	1	Reservoir (2 gal.; For PE17-TEST & PE17N-TEST)
2	11141	4	Machine Screw (#6-20 X 3/8 Lg.)	23	52167	1	Block
3	*200188	1	Decal (IMPORTANT portion is on electric motor; WARNING portion is on control box cover)	24	61167	1	Body
4	42576WH2	1	Control Box Cover (For PE17-FORN & PE17-TEST)	25	*10266	1	O-ring (3/8 X 1/4 X 1/16)
	42576BK2	1	Control Box Cover (For PE17N-TEST)	26	10177	10	Mach. Screw (1/4-20 UNC X 3/4 Lg.)
5	*40164	1	Gasket	27	*18669	2	O-Ring
6	209798	1	Retaining Ring	28	209795	1	Outlet Ball Stop
7	209805	1	Ball Bearing	29	10427	1	Pressure Plug (1/8 NPTF)
8	10519	1	Set Screw (1/4-20 UNC X 3/8 Lg.; Torque to 60/80 in. lbs.)	30	*10268	2	O-ring (1/2 X 3/8 X 1/16)
9	10136	1	Set Screw (1/4-20 UNC x 1/4 Lg.; Torque to 60/80 in. lbs.)	31	*11863	2	Backup Washer (1/2 X 3/8 X 1/16)
10	10973	1	Slotted Spring Pin (Note: Locate slot as shown.)	32	19463	1	Tee
11	45596	1	Eccentric	33	209809	1	Coupling
12	12595	1	Washer (1-1/8 X 1/2 X .077 Thk.)	34	304819	1	Hose Assembly
13	*304830	1	Oil Seal	35	52165	1	Manifold
14	10199	2	Hex Nut (1/4-20 UNC)	36	10030	1	Cap Screw (5/16-18 UNC X 3/4 Lg.; Torque to 220/240 in. lbs.)
15	61170	1	Housing	37	10022	4	Screw (1/4-20 UNC X 1-1/2 Lg.; Torque to 180/200 in. lbs.)
16	61169	1	Gerotor Housing	38	351060	1	Gasket
17	*10922	1	O-ring (2-1/8 X 1-15/16 X 3/32)	39	2007916	1	O-Ring
18	304826	1	Gerotor	40	*10442	1	Copper Washer (1/4 Bolt)
19	209794	1	Gerotor Drive Pin	41	*209787	1	Replaceable Seat
20	21846	1	Filter Support	42	*12223	1	Steel Ball (3/16 Dia.)
21	304835	1	Drive Shaft	43	209797	1	Hollow Lock Screw (7/16-20 UNF-3A; Torque to 110/130 in. lbs.)
				44	*14431	1	Compression Spring
				45	64529	1	Valve
				46	2007916	1	O-Ring

Part numbers marked with an asterisk (\*) are contained in Repair Kit No. 300430.

## HYDRAULIC SCHEMATIC



TOP VIEW



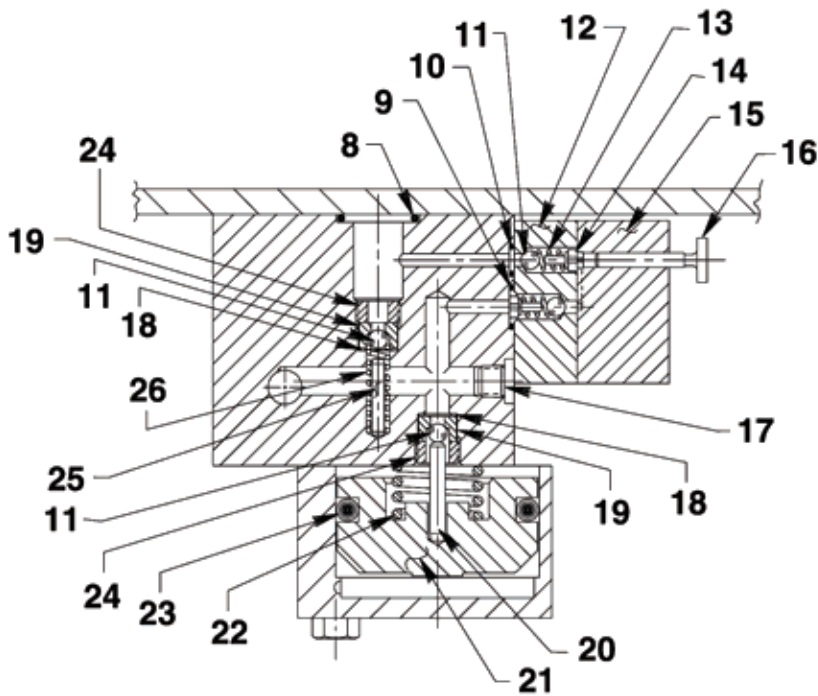
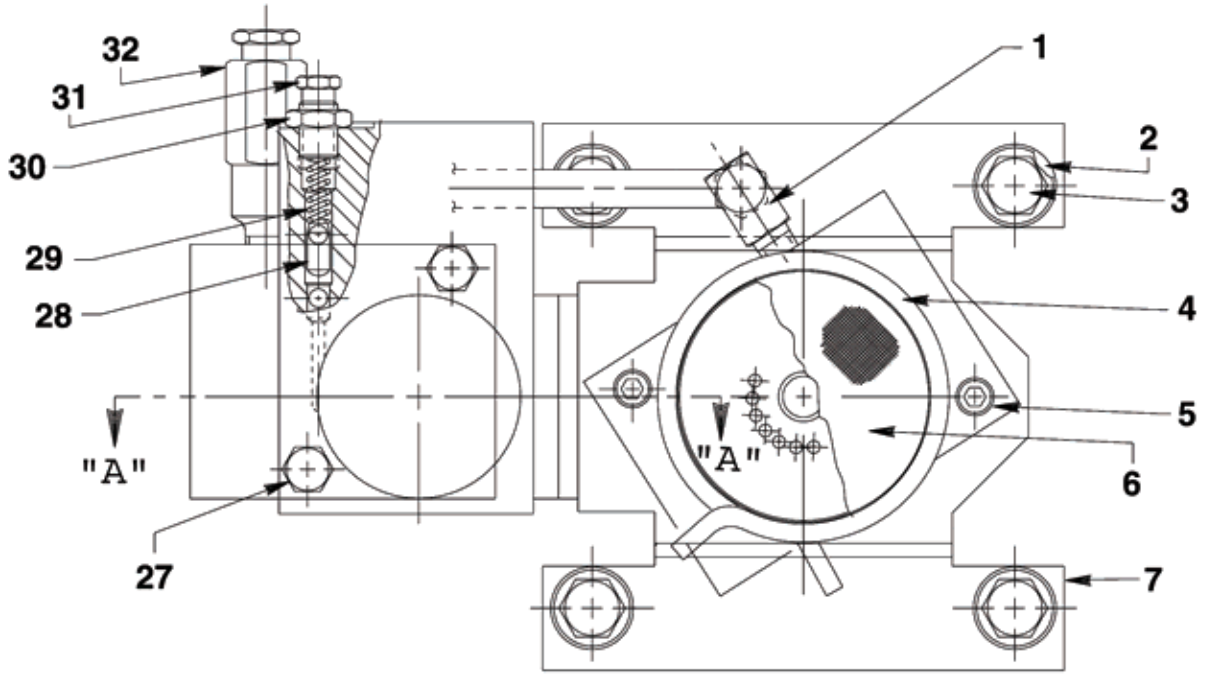
Item No.	Part No.	No. Req'd	Description
1	66218BK2	1	Cover Plate
2	10030	2	Cap Screw (5/16-18 UNC X 3/4 Lg.)
4	20937	1	Vent Cap
5	200415	1	Rubber Gasket

Refer to any operating instructions included with this product for detailed information about operation, testing, disassembly, reassembly, and preventive maintenance.

Items found in this parts list have been carefully tested and selected. **Therefore: Use only genuine Power Team replacement parts!**

Additional questions can be directed to our Technical Services Department.

**BOTTOM VIEW AND SECTION A-A**

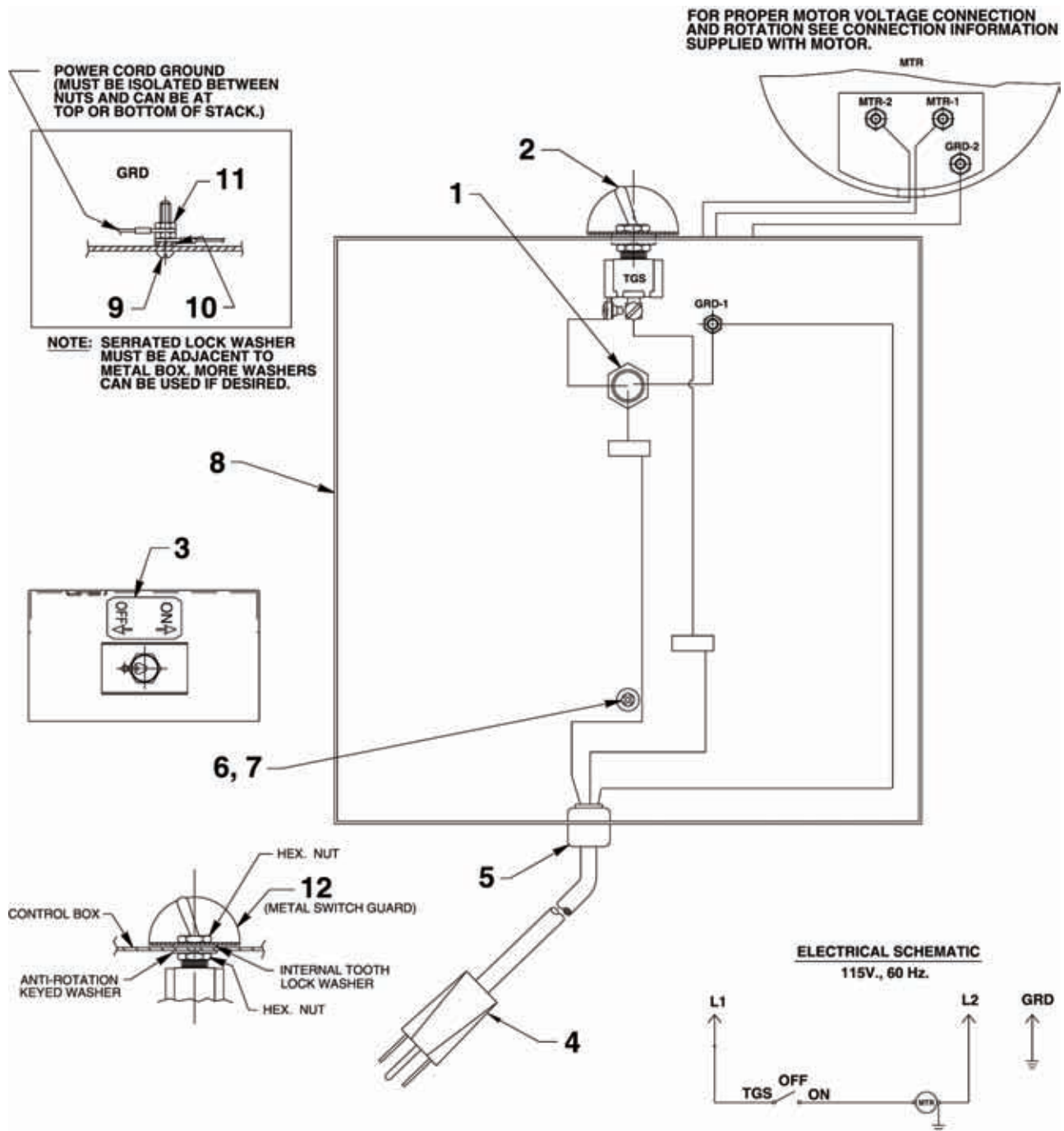


**SECTION A-A**

Item No.	Part No.	No. Req'd	Description
1	14440	1	90° Elbow Fitting
2	10258	4	Washer (For 3/8 bolt)
3	213663	4	Cap Screw (3/8-16 UNC X 1" Lg.; Torque to 230/250 in. lbs.)
4	11461	1	Hose Clamp
5	10854	2	Cap Screw (1/4-20UNC X 1-3/4Lg.; Torque to 60/80 in. lbs.)
6	21608	1	Filter
7	52174	1	Pump Mounting Bracket
8	*10273	1	O-ring (13/16 X 5/8 X 3/32)
9	*14763	1	O-ring (7/16 X 5/16 X 1/16)
10	*10265	1	O-ring (5/16 X 3/16 X 1/16)
11	*12223	4	Ball (3/16 Dia.)
12	45559	1	Block
13	*10445	2	Compression Spring (5/32 O.D. X 3/4 Lg.)
14	24549	2	Ball Guide
15	45560	1	Block
16	304820	1	Piston
17	15130	1	Plug (1/16 NPTF)
18	*10442	2	Washer (3/8 X 1/4 X 1/32)
19	*209787	2	Replaceable Seat
20	211843	1	Dowel Pin (Note: Install with radius end out.)
21	46063	1	Piston
22	*16346	1	Compression Spring (1" O.D. X 7/8 Lg.)
23	*10283	1	O-ring (2" X 1-5/8 X 3/16)
24	209797	2	Hollow Lock Screw (7/16-20 UNF-3A; Torque to 180/200 in. lbs.)
25	12149	1	Pin
26	*16057	1	Compression Spring (3/16 O.D. X 1" Lg.)
27	13037	2	Cap Screw (1/4-20 UNC X 2" Lg.; Torque to 40/50 in. lbs.)
28	15156	1	Pin
29	*11221	1	Compression Spring (1/4 O.D. X 1" Lg.)
30	10386	1	Nut (3/8-24 UNF)
31	*29786	1	Valve Adjusting Screw
32	21278-88	1	Relief Valve Assembly (Set at 8,900/9,500 PSI)

Part numbers marked with an asterisk (\*) are contained in Repair Kit No. 300430.

## MOTOR CONTROL ASSEMBLY



Item No.	Part No.	No. Req'd	Description
1	11202	1	Nipple
2	12301	1	Toggle Switch
3	205409	1	On/Off Label Decal
4	24733	1	Cord Set
5	15993	1	Strain Relief Bushing
6	252253	1	Screw (#8-32 X 1/2 Lg.)
7	12355	1	Washer (For #8 bolt)

Item No.	Part No.	No. Req'd	Description
8	42575WH2	1	Electrical Control Box (For PE17-FORN & PE17-TEST)
	42575BK2	1	Electrical Control Box (For PE17N-TEST)
9	10167	1	Screw (#10-24 UNC X 3/4 Lg.)
10	11108	1	Lockwasher (#10 External Tooth)
11	10197	2	Nut (#10-24 UNC)
12	352061	1	Metal Switch Guard