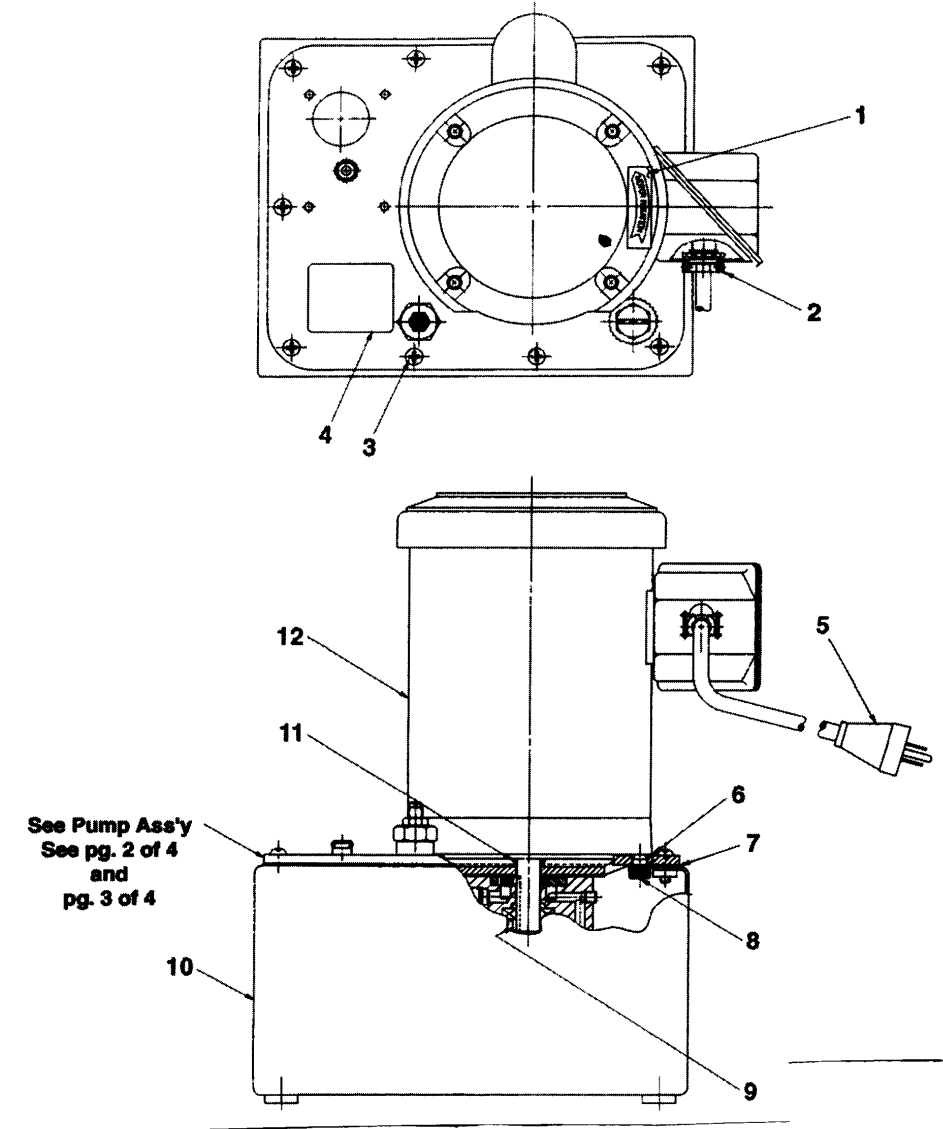
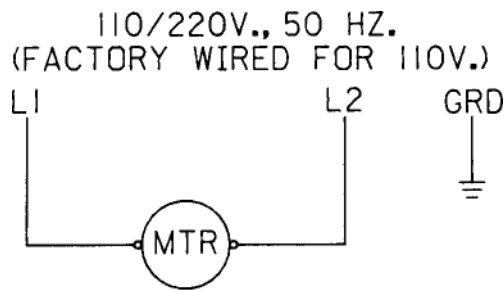


MODEL A
ELECTRIC/HYDRAULIC PUMP
1425 RPM, 3/4 H.P., 110/220V., 50 Hz

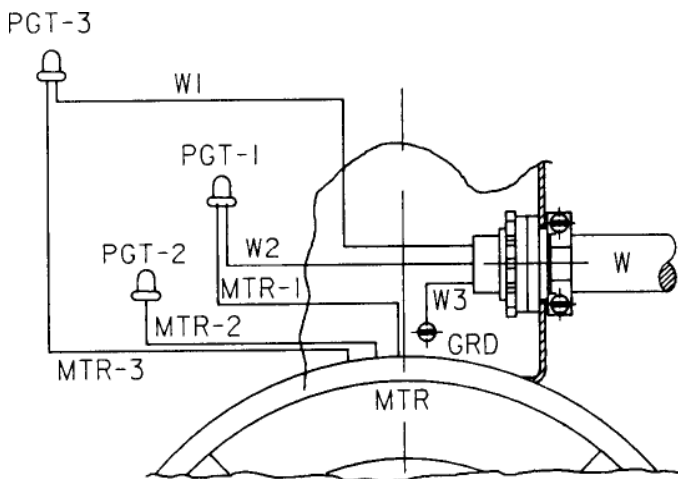


Item No.	Part No.	No. Req'd	Description
1	202504	1	Rotation Decal
2	211240	1	Connector
3	10177	10	Machine Screw (1/4-20 X 3/4 Lg.)
4	46758	1	Nameplate Decal
5	21051	1	Cord Set (12/3 STO)
6	307425	1	Motor Base Gasket
7	40164	1	Gasket
8	15187	4	Cap Screw (3/8-16 UNC X .625 Lg.; Torque to 90/100 in. lbs.)
9	214097	1	Key
10	40063BK2	1	Reservoir
11	213674	1	Shaft Seal
12	44793	1	Electric Motor

ELECTRICAL SCHEMATIC



WIRING DIAGRAM



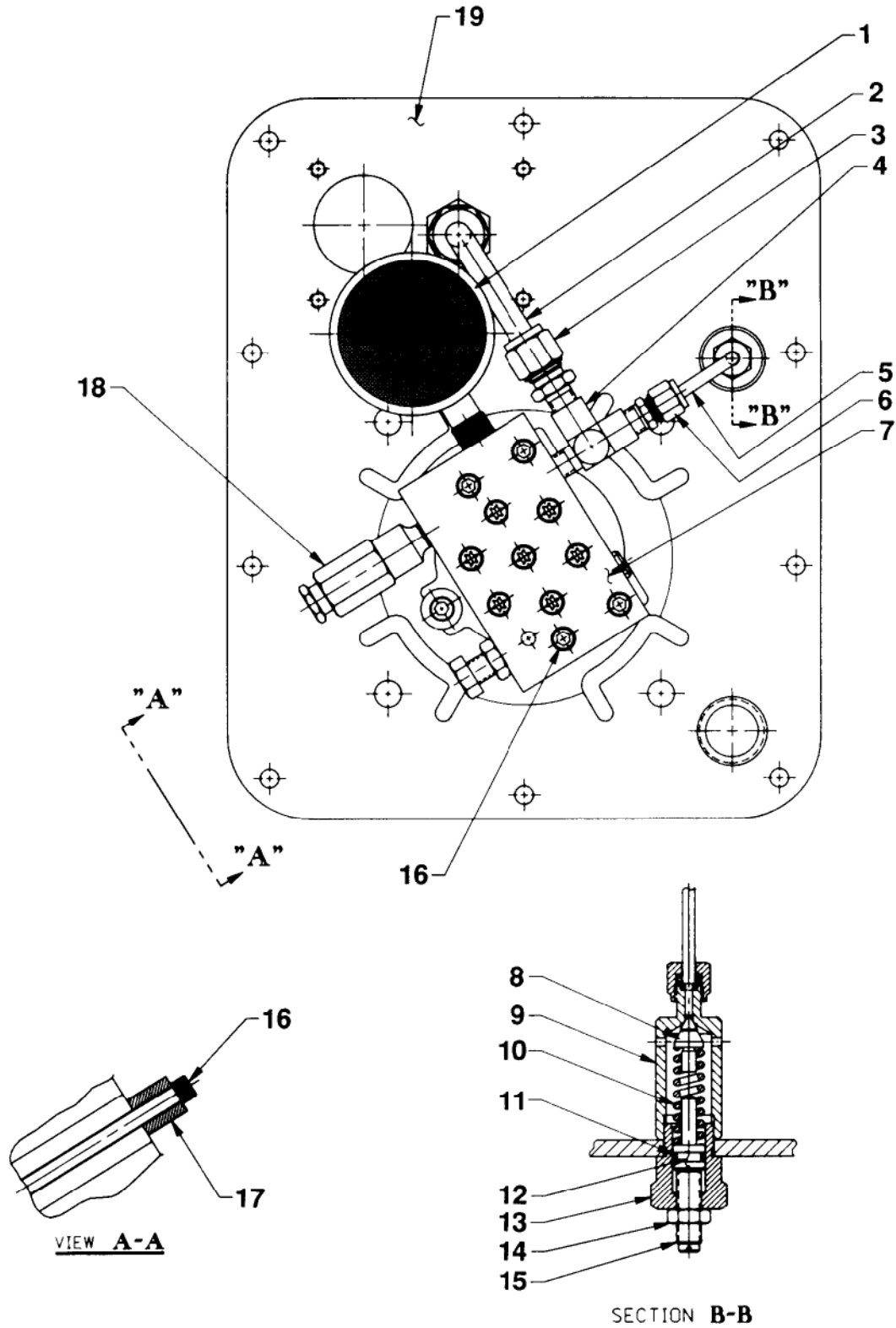
⚠ WARNING

To help avoid personal injury, all electrical work must be done by a qualified electrician.

North American & International Color Codes

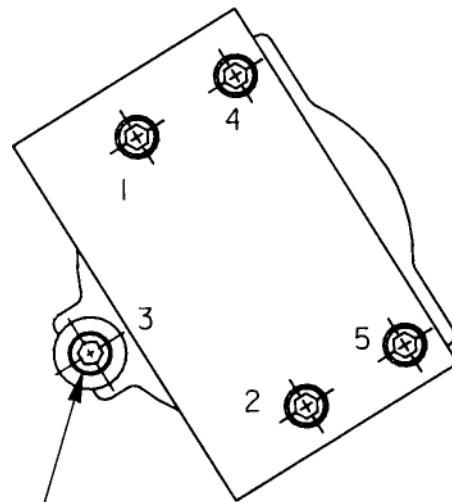
Conductors	North American	International
Line	Black	Brown
Neutral	White	Blue
Ground	Green	Green/Yellow

BASIC PUMP ASSEMBLY BOTTOM VIEW



Item No.	Part No.	No. Req'd	Description
1	29682	1	Strainer - Filter
2	214930	1	Oil Line Tube
3	12696	1	Straight Fitting
4	18969	1	Tee Fitting
5	214868	1	Pressure Regulator Tube
6	11173	1	Straight Fitting
7	36922	1	High Pressure Pump Ass'y (On pumps built before 2-1-97. See page 4 of 5)
	351410	1	High Pressure Pump Ass'y (On pumps built after 2-1-97. See page 5 of 5)
8	21046	1	Valve Stem
9	22361	1	Valve Body
10	10495	1	Compression Spring
11	10268	1	O-ring (1/2 X 3/8 X 1/16)
12	21306	1	Spring GuideN
13	21305	1	Valve Cap
14	10386	1	Hex Jam Nut
15	22362	1	Valve Adjusting Screw
16	15642	5	Soc. Hd. Cap Screw (1/4-20 UNC X 1/2 Lg.; Torque to 55/65 in. lbs.)
17	214720	1	Spacer
18	21278	1	Valve Relief
19	47404	1	Reservoir Cover

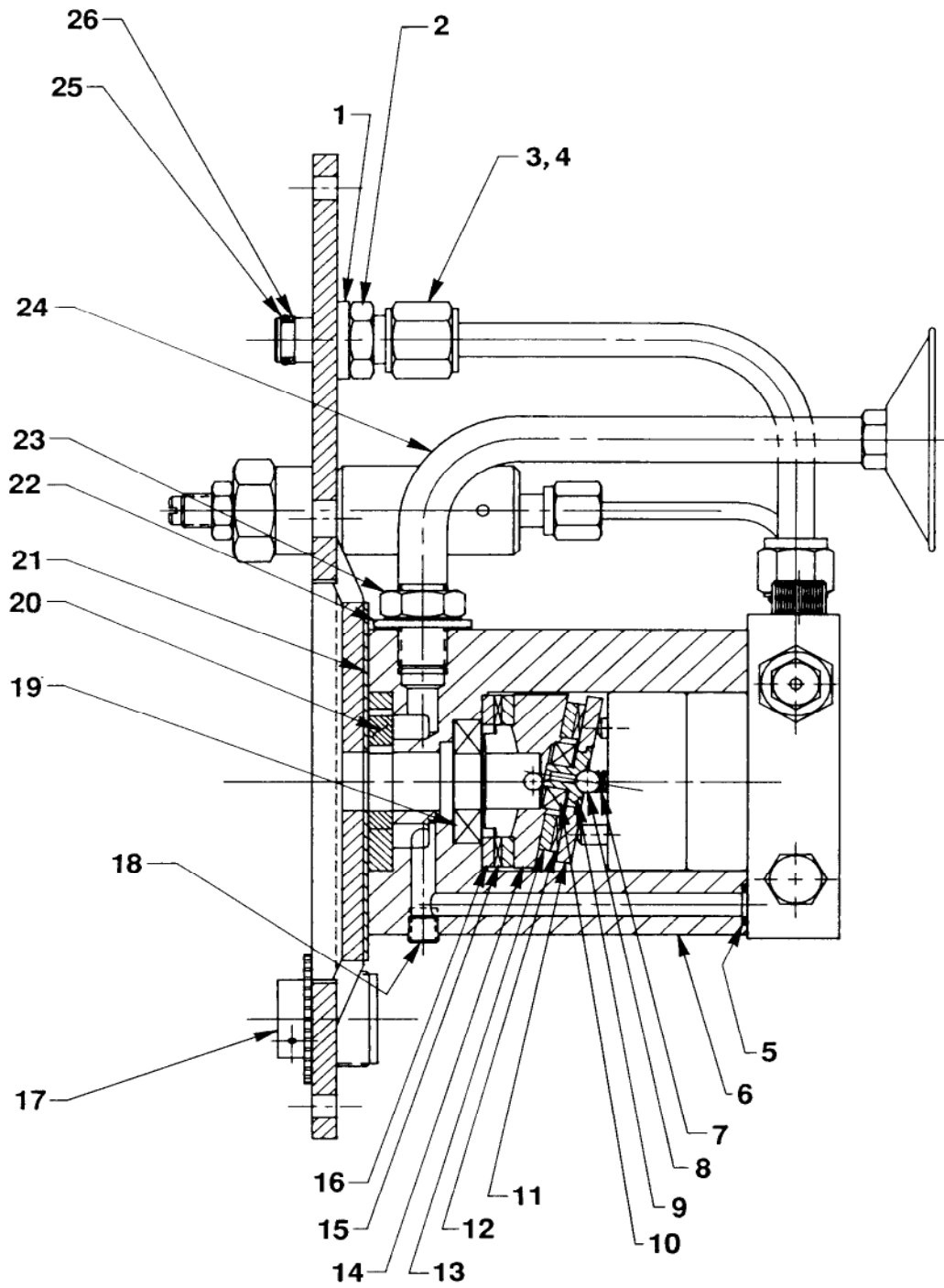
BASIC BOLT TIGHTENING SEQUENCE



CROSS TORQUE IN 20/30 IN. LBS. INCREMENTS IN ORDER SHOWN.

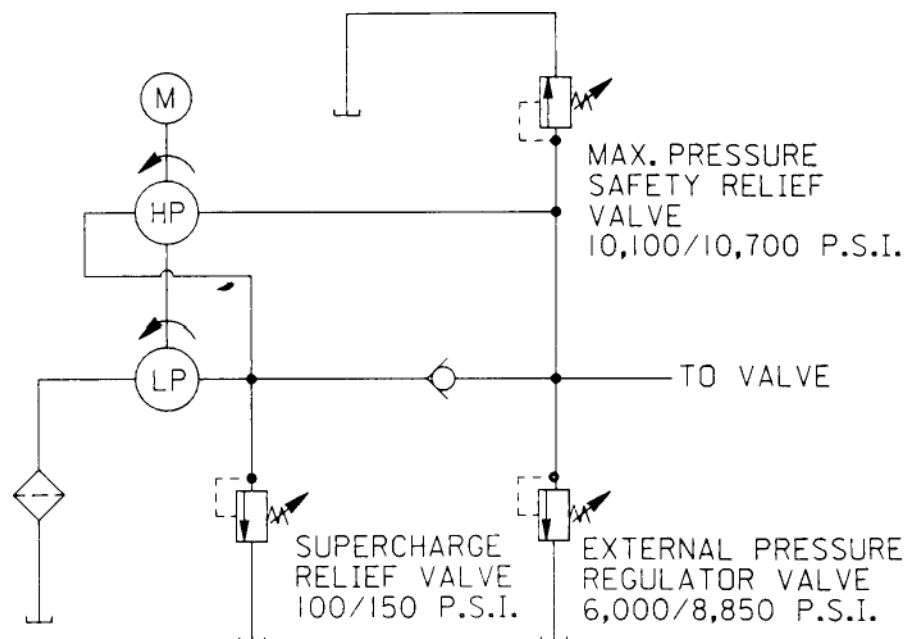
Note: Shaded areas reflect last revision(s) made to this form.

BASIC PUMP ASSEMBLY SIDE VIEW



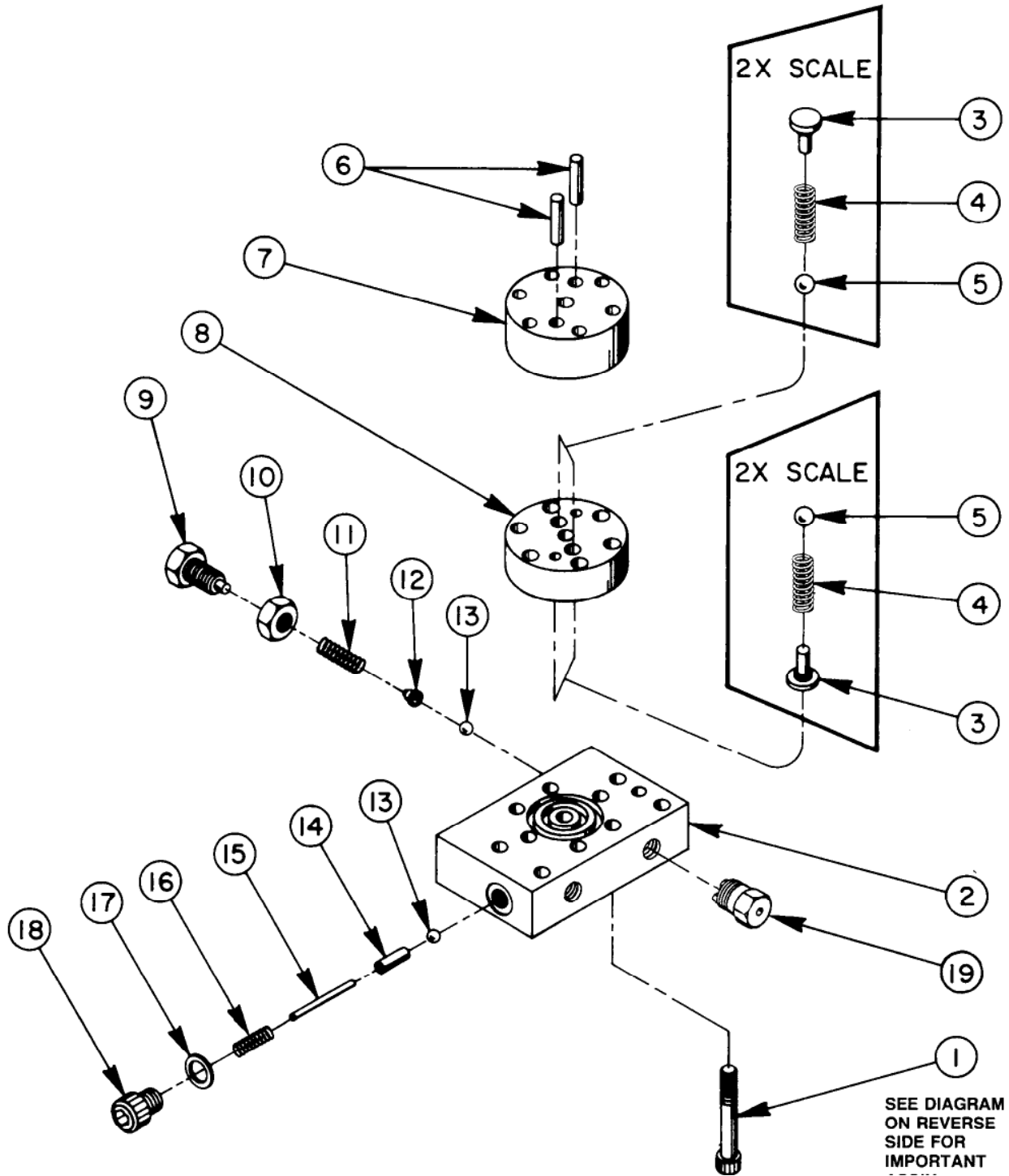
Item No.	Part No.	No. Req'd	Description
1	21484	1	Washer
2	214882	1	Valve Connector (Note: Torque valve connector [214882] to 20/30 ft. lbs. into coverplate [47404]; hold valve connector [214882] and torque tube nut [10431] to 40/50 ft. lbs.)
3	10430	1	Sleeve Tube (For 3/8 tube)
4	10431	1	Tube Nut (5/8-18 UNF)
5	10267	1	O-ring (7/16 X 5/16 x 1/16)
6	52883	1	Body Pump
7	16320	1	Compression Spring
8	10375	1	Steel Ball (1/4" dia.)
9	23547	1	Top Plate Bearing
10	11814	1	Ball Bearing
11	23548	1	Top Plate Bearing
12	15431	1	Needle Thrust Bearing
13	15432	1	Needle Thrust Race Bearing
14	35271	1	Angle Plate
15	11228	1	Needle Thrust Bearing
16	11227	2	Needle Thrust Race Bearing
17	213706	1	Filler Cap
18	11084	1	Pipe Plug (1/16 NPTF; Torque to 35/45 in. lbs. oiled)
19	15695	1	Ball Bearing
20	15693	1	Gerotor Set
21	307296	1	Wear Plate
22	213709	1	Seal Washer (Turn on - Do not push on)
23	10390	1	Hex Jam Nut
24	213686	1	Intake Tube
25	10268	1	O-ring (1/2 X 3/8 X 1/16)
26	11863	1	Backup Washer (Teflon)

HYDRAULIC SCHEMATIC



#36922 HIGH PRESSURE PUMP ASSEMBLY (ON PUMPS BUILT BEFORE 2-1-97)

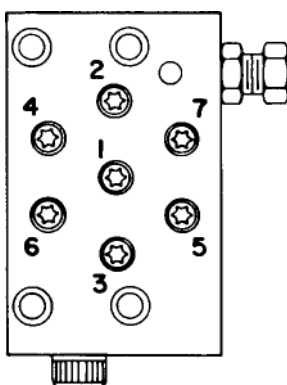
To Parts
List



Item No.	Part No.	No. Req'd	Description
1	*16747	7	Torx Drive Cap Screw (1/4-28 X 1-3/4 Lg.; See diagram below)
2	*36912	1	Pump End Plate
3	*24549	4	Valve Guide
4	*10445	4	Compression Spring (.161 O.D. X 23/32 Lg.)
5	*12223	4	Steel Ball (3/16 dia.)
6	*20775	2	Piston (7/32 dia.)
7	*41006	1	Pump Barrel
8	*41007	1	Valve Head
9	200797	1	Adjusting Screw
10	10386	1	Jam Nut (3/8-24 UNF)
11	15691	1	Compression Spring (1/4 O.D. X 5/8 Lg.)
12	200796	1	Adapter, Spring & Ball
13	10375	2	Steel Ball (1/4 dia.)
14	201998	1	Sleeve
15	12571	1	Roll Pin (1/8 dia. X 1-3/8 Lg.)
16	14431	1	Compression Spring (3/16 O.D. X 3/4 Lg.)
17	12042	1	Copper Washer (9/16 X 3/8 X 1/32)
18	29690	1	Cap Screw (Torque to 180 in. lbs.)
19	306957	1	Air Bleed Valve

Consult factory when replacing items marked with an asterisk (*).

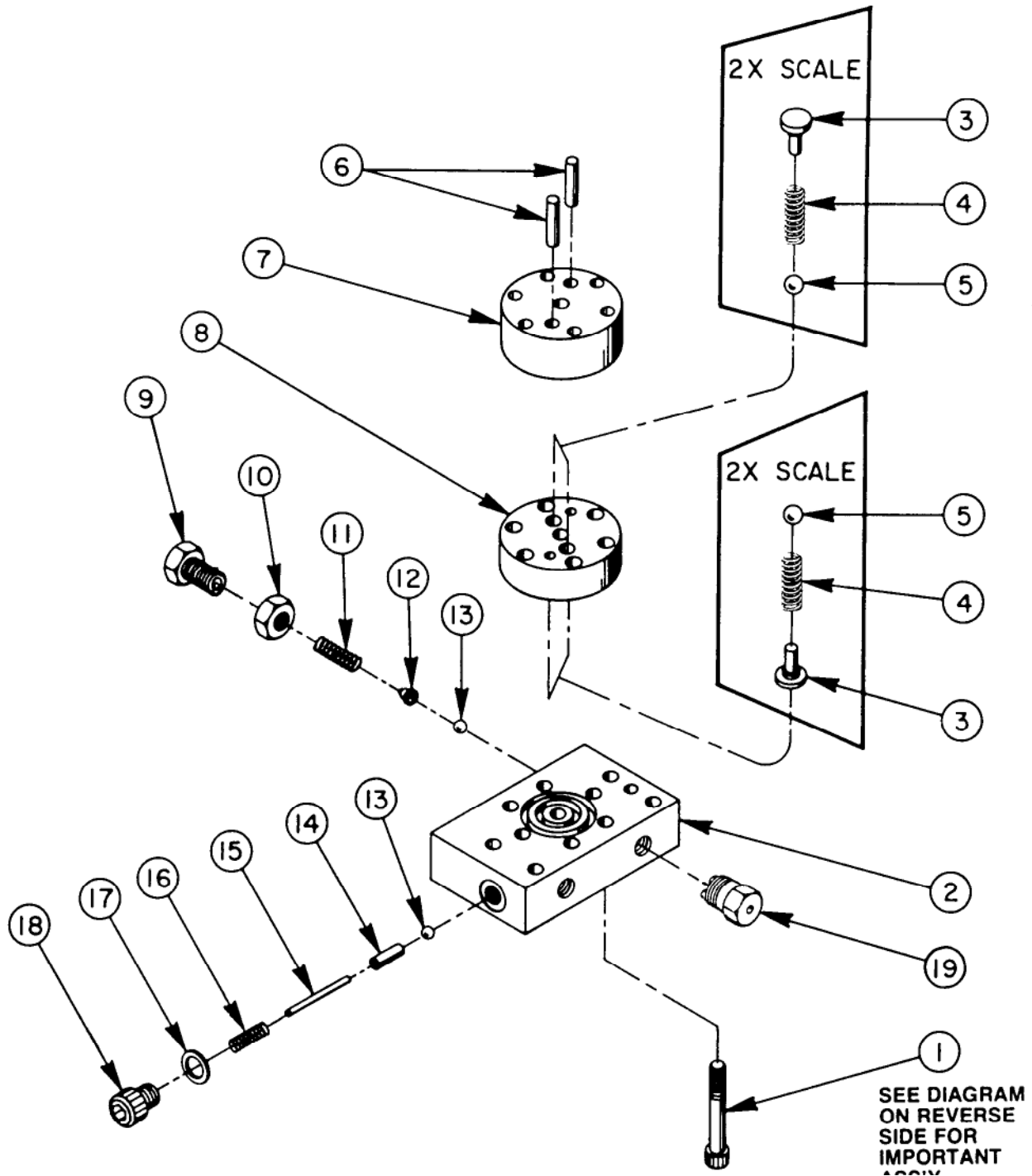
HIGH PRESSURE BOLT TIGHTENING SEQUENCE BEFORE 2-1-97



NOTE: Assemble in sequence shown. Lubricate under head and on threads. Torque to 170 in. lbs.

#351410 HIGH PRESSURE PUMP ASSEMBLY (ON PUMPS BUILT AFTER 2-1-97)

To Parts List

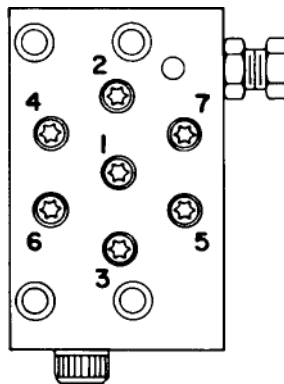


Note: This page was added at the last revision(s) made to this form.

Item No.	Part No.	No. Req'd	Description
1	*16747	7	Torx Drive Cap Screw (1/4-28 X 1-3/4 Lg.; See diagram below)
2	*36912	1	Pump End Plate
3	*24549	4	Valve Guide
4	*10445	4	Compression Spring (.161 O.D. X 23/32 Lg.)
5	*12223	4	Steel Ball (3/16 dia.)
6	*20775	2	Piston (7/32 dia.)
7	*41006	1	Pump Barrel
8	*41007	1	Valve Head
9	29786	1	Adjusting Screw
10	10386	1	Jam Nut (3/8-24 UNF)
11	11454	1	Compression Spring (1/4 O.D. X 5/8 Lg.)
12	200796	1	Adapter, Spring & Ball
13	10375	2	Steel Ball (1/4 dia.)
14	201998	1	Sleeve
15	12571	1	Roll Pin (1/8 dia. X 1-3/8 Lg.)
16	14431	1	Compression Spring (3/16 O.D. X 3/4 Lg.)
17	12042	1	Copper Washer (9/16 X 3/8 X 1/32)
18	29690	1	Cap Screw (Torque to 180 in. lbs.)
19	306957	1	Air Bleed Valve

Consult factory when replacing items marked with an asterisk (*).

HIGH PRESSURE BOLT TIGHTENING SEQUENCE AFTER 2-1-97



NOTE: Assemble in sequence shown. Lubricate under head and on threads. Torque to 170 in. lbs.

Note: This page was added at the last revision(s) made to this form.